

TRIODE THYRATRON

CT10-12

This data should be read in conjunction with
"Operating Notes on Thyratrons"

OPERATING CONDITIONS

Heater	Voltage	5.0	V
	Current (approx.)	20	A
Mounting position		Vertical, base down	

CHARACTERISTICS

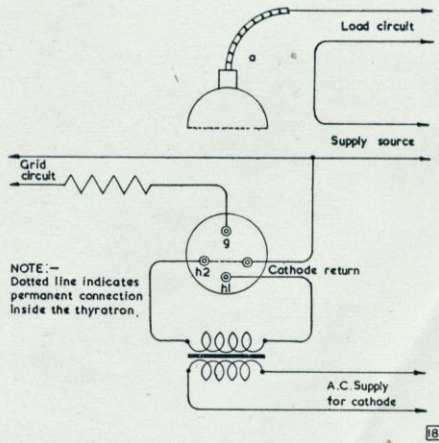
Valve voltage drop		10 to 24	V		
Deionisation time (approx.)		100	μ s		
Control (measured at ambient temperature 20°C)					
Anode voltage	500	1,000	2,000	10	kV
Critical grid voltage	0	-1	-2.5	-7	V approx.

LIMITING VALUES

Max. peak forward anode voltage		10	kV
Max. peak inverse anode voltage		10	kV
Max. instantaneous anode current	{ below 25 c/s 25 c/s and above	25	A
		75	A
Max. mean anode current—averaged over 30 seconds		12.5	A
Max. instantaneous grid current		1.0	A
Min. cathode heating time		15	minutes
Working ambient temperature		10 to 40	°C

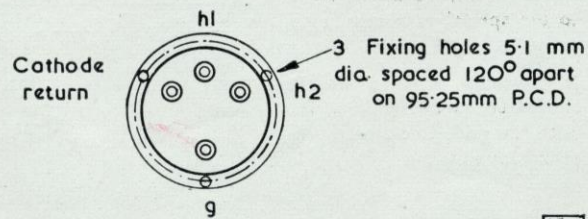
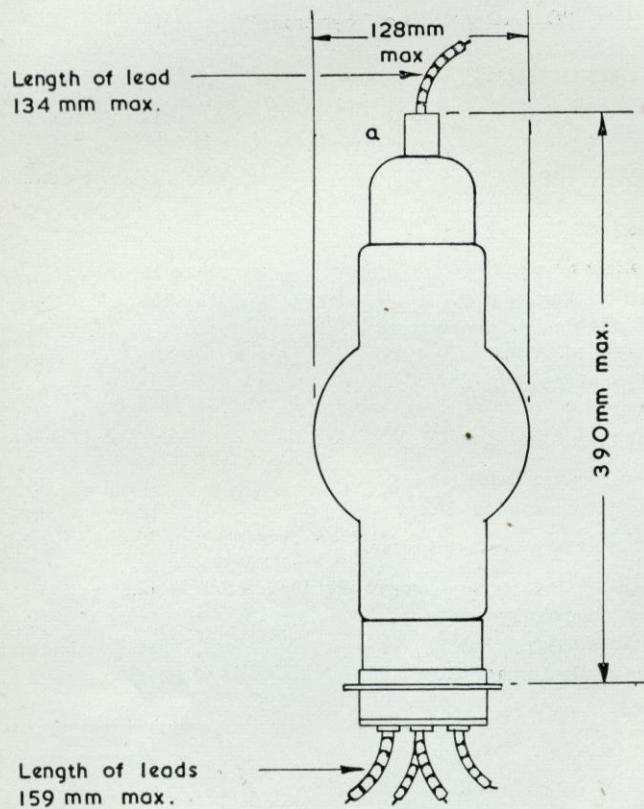
The diagram shows the recommended method of connecting the CT10-12, the connections to the special base cap being as viewed from below.

A resistance of 10 to 100 k Ω should be connected in series with the grid, as close to the socket as possible.



CT10-12

TRIODE THYRATRON



184