

MAZDA

UU 2, UU 60/250, UU 120/350 and UU 120/500 Rectifying Valves

RATING.

	UU 2.	UU 60/250.	UU 120/350.	UU 120/500.
Filament Volts	4.0	4.0	4.0	4.0
Filament Amps.	1.0	2.0	2.5	2.5
Maximum R.M.S. Anode Volts	250	250	350	500
Maximum Output Current (mA)	60	60	120	120
Price	12/6	12/6	15/-	20/-

DIMENSIONS.

	UU 2.	UU 60/250.	UU 120/350.	UU 120/500.
Maximum overall length (including pins) (m.m.)	116	125	130	130
Maximum diameter (m.m.)	50	58	58	58

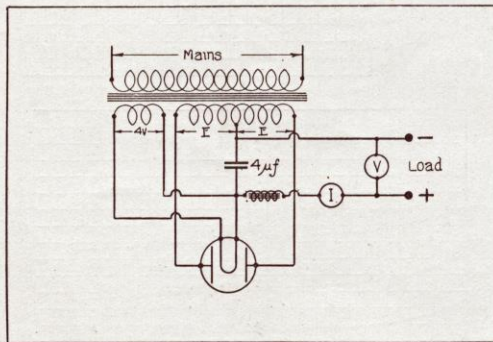


Fig. 1

GENERAL.

These valves have been designed with a very conservative rating in order to take care of all variations which exist on supply mains. The Mazda Valves UU 2 and UU 60/250 are full-wave rectifying valves of the indirectly-heated cathode type. The Mazda Valve UU 120/350 and UU 120/500 are full-wave rectifying valves with oxide-coated filaments, having an exceptionally low A.C. resistance, which enables very good regulation to be obtained. All these valves have slow heating filaments, which is a considerable advantage when high power output valves are employed or when electrolytic condensers are used in the smoothing circuits, owing to the H.T. voltage being applied gradually.



THE EDISON SWAN ELECTRIC CO. LTD.
Incorporating the Wiring Supplies, Lighting Engineering and
Radio Business of the British Thomson-Houston Co. Ltd., and
Metro-Vick Supplies.

Radio Division Showrooms:
155 Charing Cross Road, London, W.C.2
Showrooms in all the Principal Towns

EDISWAN



UU 2, UU 60/250, UU 120/350 and UU 120/500

APPLICATION.
 These rectifiers are suitable for use in eliminators supplying small receivers, or large amplifiers for public address or similar work. Circuits showing the method of using these full-wave rectifiers are given in Fig. 1. The output voltage for any given supply voltage can be computed from the curves. Allowance should, of course, be made for the voltage drop in the smoothing circuits.

