

**REFLEX KLYSTRON**

Frequency: Within the band 5.925 to 8.100Gc/s,  
mechanical tuning.

Power output: 1.0W

Construction: Metal, waveguide output.

Application: Power oscillator for microwave links.

# KS6-1000 series

# KS7-1000 series

**PRELIMINARY DATA****CHARACTERISTICS**

Mechanical tuning range	Min.		Max.	
KS6-1000F	5.925	to	6.225	Gc/s
KS6-1000E	6.125	to	6.425	Gc/s
KS6-1000G	6.425	to	6.575	Gc/s
KS6-1000D	6.575	to	6.875	Gc/s
KS7-1000C	6.875	to	7.125	Gc/s
KS7-1000B	7.125	to	7.425	Gc/s
KS7-1000A	7.425	to	7.750	Gc/s
KS7-1000Z	7.750	to	8.100	Gc/s
Electronic tuning range, between half-power points at any frequency in the mechanical tuning range	21	—		Mc/s
Modulation sensitivity	225		525	kc/s per V
Frequency change with temperature	-100		+100	kc/s per °C
Power output at any frequency in the band for all types except KS7-1000A and KS7-1000Z	700	—		mW
Power output at any frequency in the band for types KS7-1000A and KS7-1000Z	500	—		mW

**CATHODE**

Indirectly heated

$V_h$	6.3	V
$I_h$	800	mA

**MOUNTING POSITION**

Any

**TYPICAL OPERATION (for all types)**

$f$	mid-band	Gc/s
$V_{\text{resonator}}$	750	V
$I_{\text{resonator}}$	65	mA
$V_{\text{reflector}}$	-350	V
$P_{\text{out}}$	1.0	W
Modulation sensitivity	300	kc/s per V
Electronic tuning range between half-power points	30	Mc/s

**COOLING**

Forced-air

An air flow of 30cu.ft./min. (0.85m<sup>3</sup>/min.) should be directed on the cooling fins, to keep the body temperature below the permitted maximum.

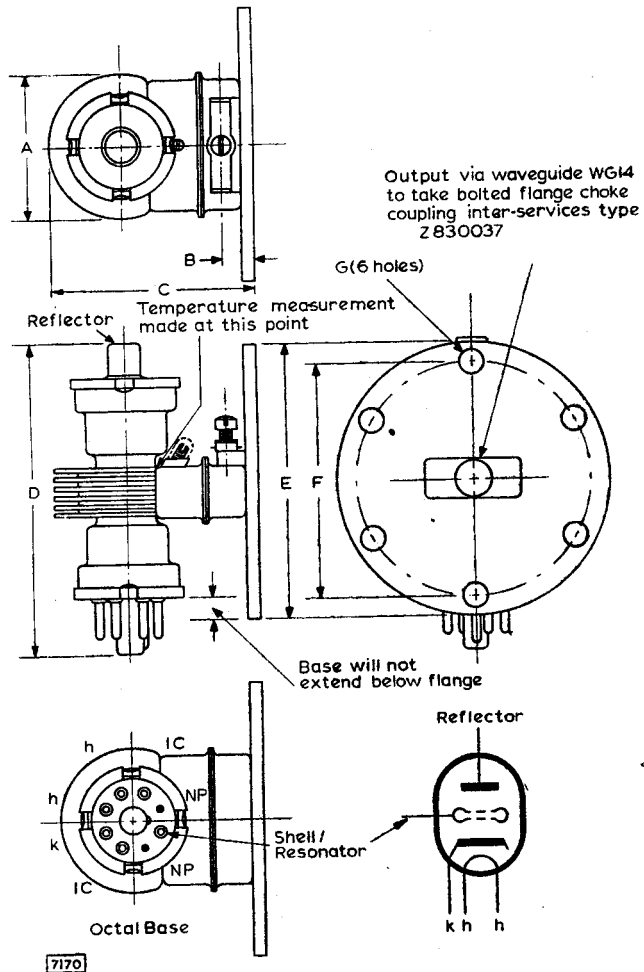
**LIMITING VALUES (absolute ratings)**

$V_{\text{resonator max.}}$	750	V
$I_{\text{resonator max.}}$	80	mA
$-V_{\text{reflector max.}}$	1.0	kV
$+V_{\text{reflector max.}}$	0	V
$V_{h-k \text{ max.}}$	45	V
Maximum body temperature	150	°C



**KS6-1000 series**  
**KS7-1000 series**

**REFLEX KLYSTRON**



**DIMENSIONS**

	Inches	Millimetres		Inches	Millimetres
A	1.75	44.45 max.	E	3.19	81.03 max.
B	0.375	9.53	F	2.760	70.10 max.
C	2.375	60.33 max.	G	0.220	5.59
D	3.75	95.25 max.			