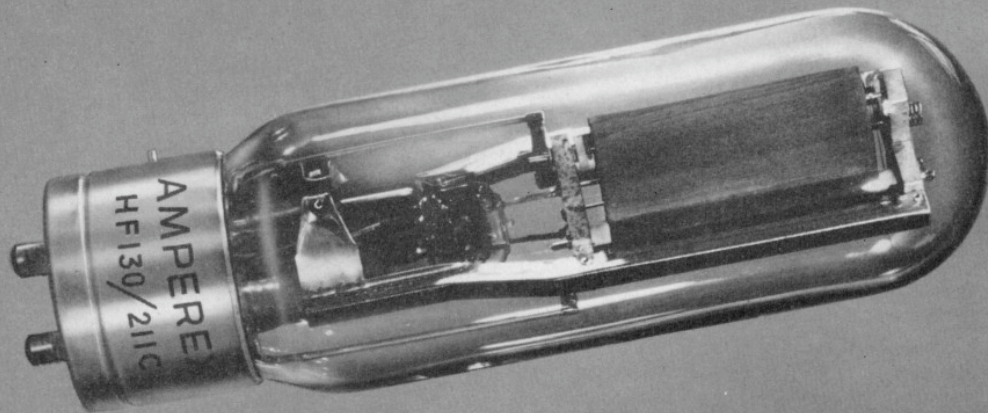


AMPEREX TRANSMITTING TUBE HF-130/211-C



*RF Power Amplifier or Oscillator
AF Power Amplifier or Modulator*

GENERAL CHARACTERISTICS

RADIATION COOLED TRIODE

ELECTRICAL

Filament	Thoriated Tungsten
Voltage	10-10.5 volts
Current	3.25 amperes
Amplification Factor	12.5
Grid to Plate Transconductance, $I_p = 100$ ma	4300 micromhos
Direct Interelectrode Capacitances	
Grid to Plate	9.0 $\mu\mu\text{f}$
Grid to Filament	5.5 $\mu\mu\text{f}$
Plate to Filament	3.5 $\mu\mu\text{f}$
Frequency for Maximum Ratings	20 megacycles

MECHANICAL

Overall Dimensions	
Maximum Length	8 $\frac{1}{8}$ inches
Maximum Diameter	2 $\frac{5}{16}$ inches
Base	Standard Jumbo 4-Pin Bayonet
Mounting Position—Vertical Base up or down	
Horizontal	Plane of electrodes vertical
Net Weight (approx.)	8 ounces
Shipping Weight (approx.) (one tube)	3 pounds

**HF-130/
211-C**

HF-130/211-C—AMPEREX TRANSMITTING TUBE

MAXIMUM RATINGS AND TYPICAL OPERATING CONDITIONS

A.F. Power Amplifier and Modulator—Class A

	Maximum Rating per Tube	Typical Operation One Tube	
A.C. Filament Voltage	10	10
D.C. Plate Voltage	1250	1000	1200
D.C. Grid Voltage	-55	-70
Peak A.F. Grid Voltage	50	65
D.C. Plate Current (ma)	75	80
Plate Dissipation (watts)	100	75	96
Load Resistance (ohms)	4800	7600
Power Output (watts)	14	21
Distortion (% Second Harmonic)	5	3

A.F. Power Amplifier and Modulator—Class B

	Maximum Rating per Tube	Typical Operation Two Tubes	
A.C. Filament Voltage	10	10
D.C. Plate Voltage	1250	1000	1250
D.C. Grid Voltage	-72	-90
Load Resistance (ohms per tube)	1250	1675
Effective Load Resistance (plate to plate) (ohms)	5000	6700
Zero Signal Plate Current (ma)	60	50
Peak A.F. Grid to Grid Voltage	344	380
Max. Signal D.C. Plate Current (ma)	210	400	400
Max. Signal Plate Input (watts)	260	400	500
Plate Dissipation (watts)	125
Max. Signal Driving Power (approx.) (watts)	4	4.5
Max. Signal Plate Power Output (watts)	240	320

R.F. Power Amplifier—Class B—Telephony

(Carrier conditions for use with modulation factor of 1.0)

	Maximum Rating per Tube	Typical Operation One Tube	
A.C. Filament Voltage	10	10
D.C. Plate Voltage	1250	1000	1250
D.C. Grid Voltage	-60	-85
Peak R.F. Grid Voltage	100	110

(continued from previous column)

D.C. Plate Current (ma)	150	140	130
Plate Input (watts)	175	140	162
Plate Dissipation (watts)	125	95	107
D.C. Grid Current (approx.) (ma)	2.5	1.0
Driving Power at Peak Modulation (approx.) (watts)	3.5	3.6
Plate Power Output (watts)	45	55
Frequency Limit for Above Operation (mc)	20	30	20

Plate Modulated R.F. Power Amplifier Class C—Telephony

(Carrier conditions for use with modulation factor of 1.0)

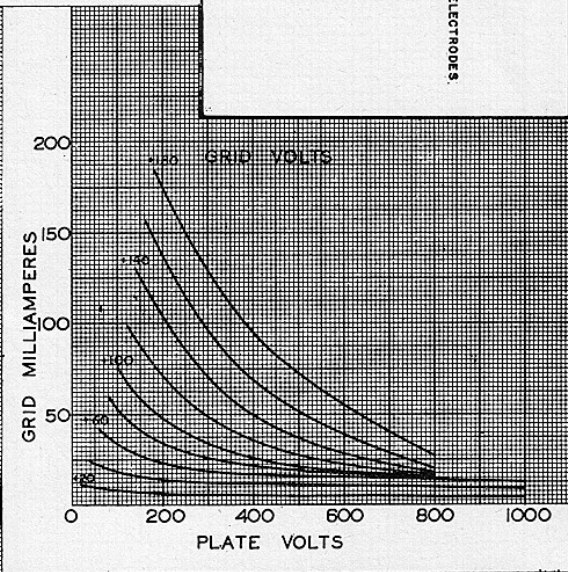
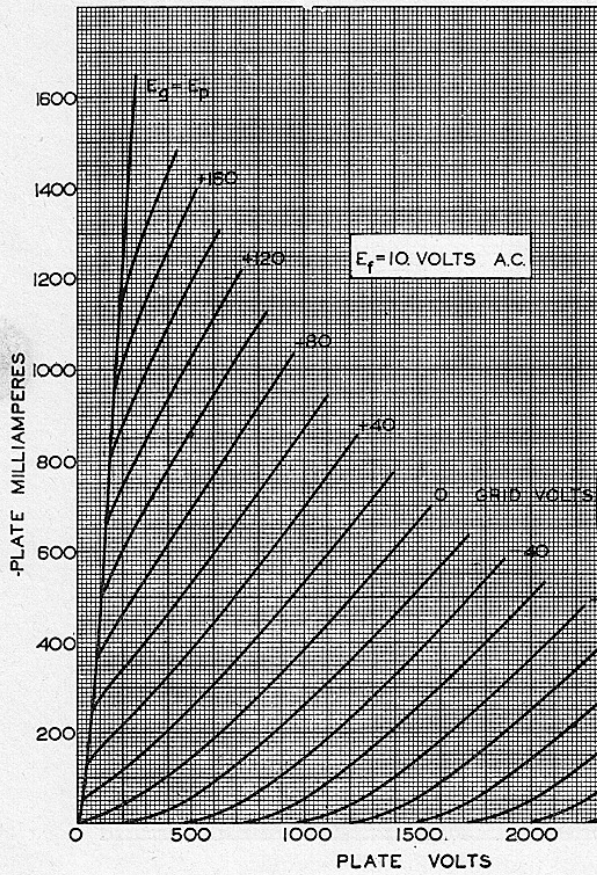
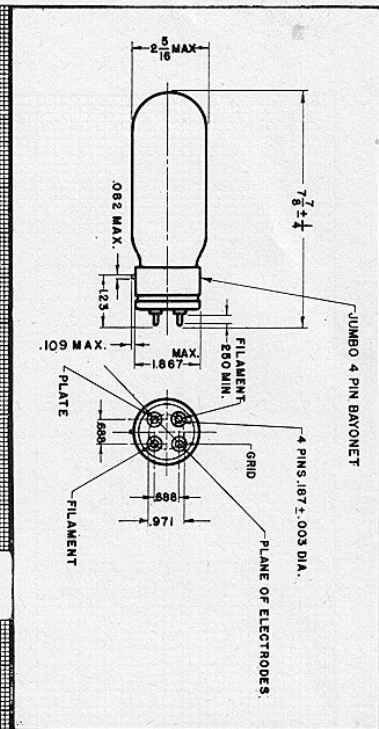
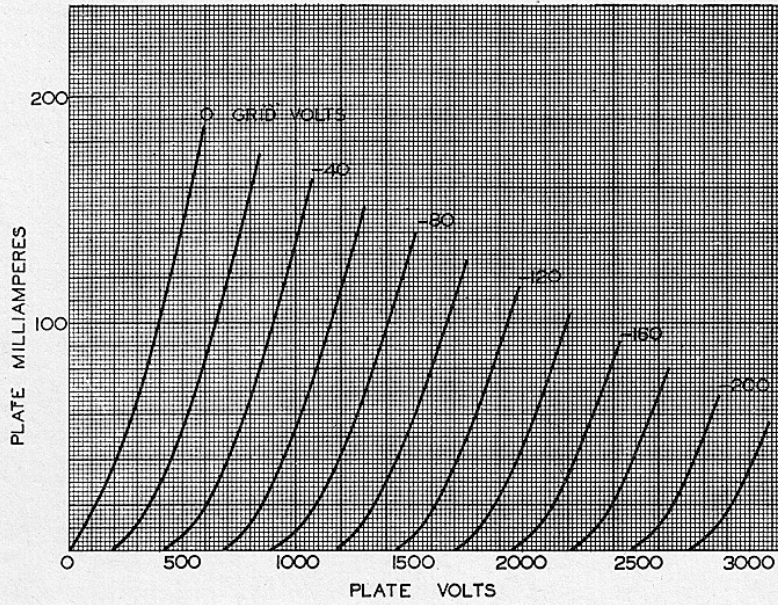
	Maximum Rating per Tube	Typical Operation One Tube	
A.C. Filament Voltage	10.5	10.5
D.C. Plate Voltage	1250	1000	1250
D.C. Grid Voltage	-400	-250	-300
Peak R.F. Grid Voltage	380	430
D.C. Plate Current (ma)	175	170	166
Plate Input (watts)	220	170	208
Plate Dissipation (watts)	85	55	60
D.C. Grid Current (approx.) (ma)	50	10	8
Driving Power (approx.) (watts)	3.5	3.5
Plate Power Output (watts)	115	148
Frequency Limit for Above Operation (mc)	10	20	10
F.C.C. Broadcast Rating (watts)	125	125

R.F. Power Amplifier or Oscillator Class C—Telegraphy

	Maximum Rating per Tube	Typical Operation One Tube	
A.C. Filament Voltage	10	10
D.C. Plate Voltage	1250	1000	1250
D.C. Grid Voltage	-400	-200	-250
Peak R.F. Grid Voltage	340	385
D.C. Plate Current (ma)	210	200	200
Plate Input (watts)	260	200	250
Plate Dissipation (watts)	125	55	80
D.C. Grid Current (approx.) (ma)	50	15	10
Driving Power (approx.) (watts)	5	3.5
Plate Power Output (watts)	145	170
Frequency Limit for Above Operation (mc)	20	30	20

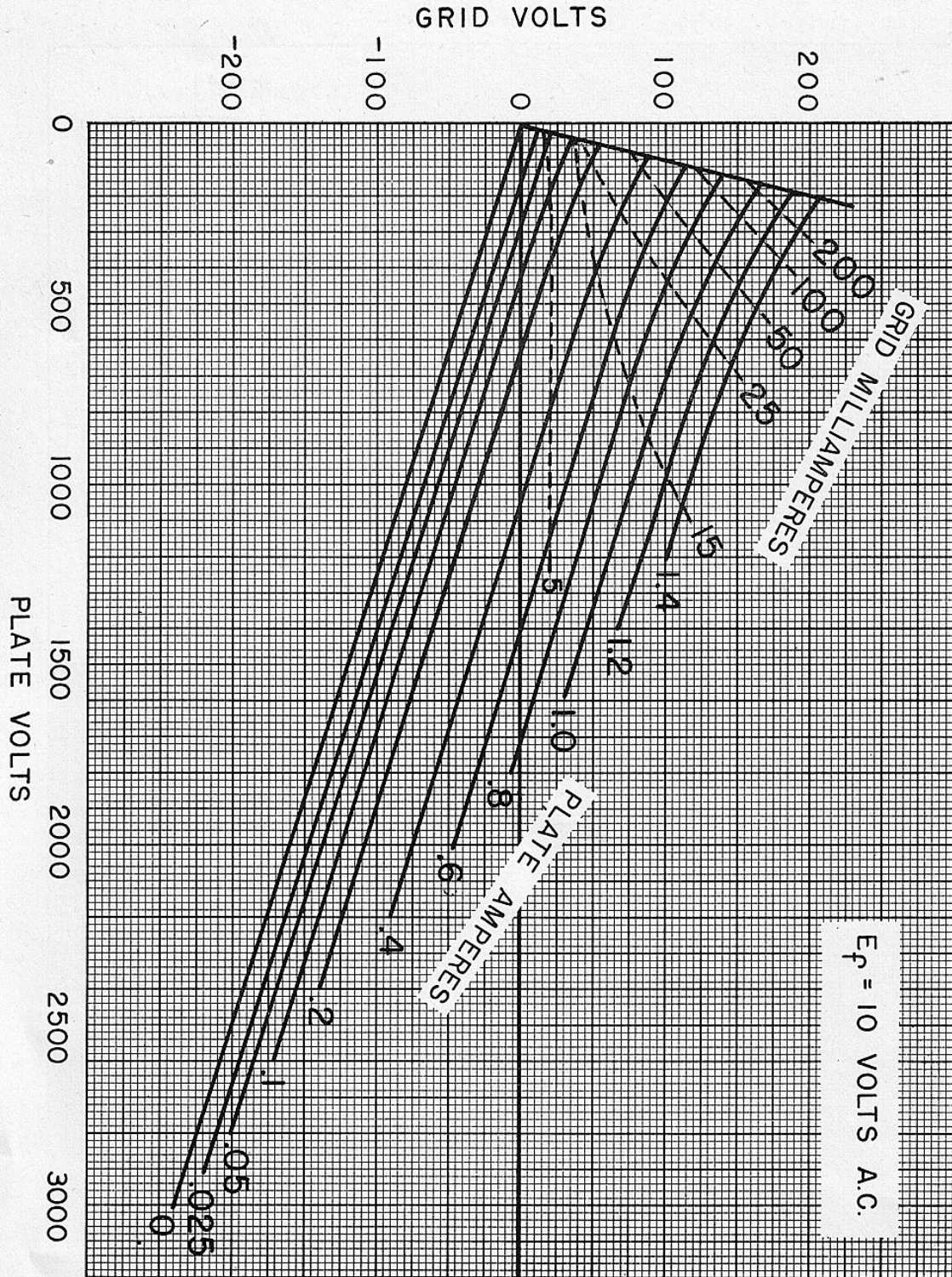
**HF-130/
211-C**

AMPEREX TRANSMITTING TUBE HF-130/211-C



**HF-130/
211-C**

HF-130/211-C—AMPEREX TRANSMITTING TUBE



HF-130/
211-C