

CV456

TESTS

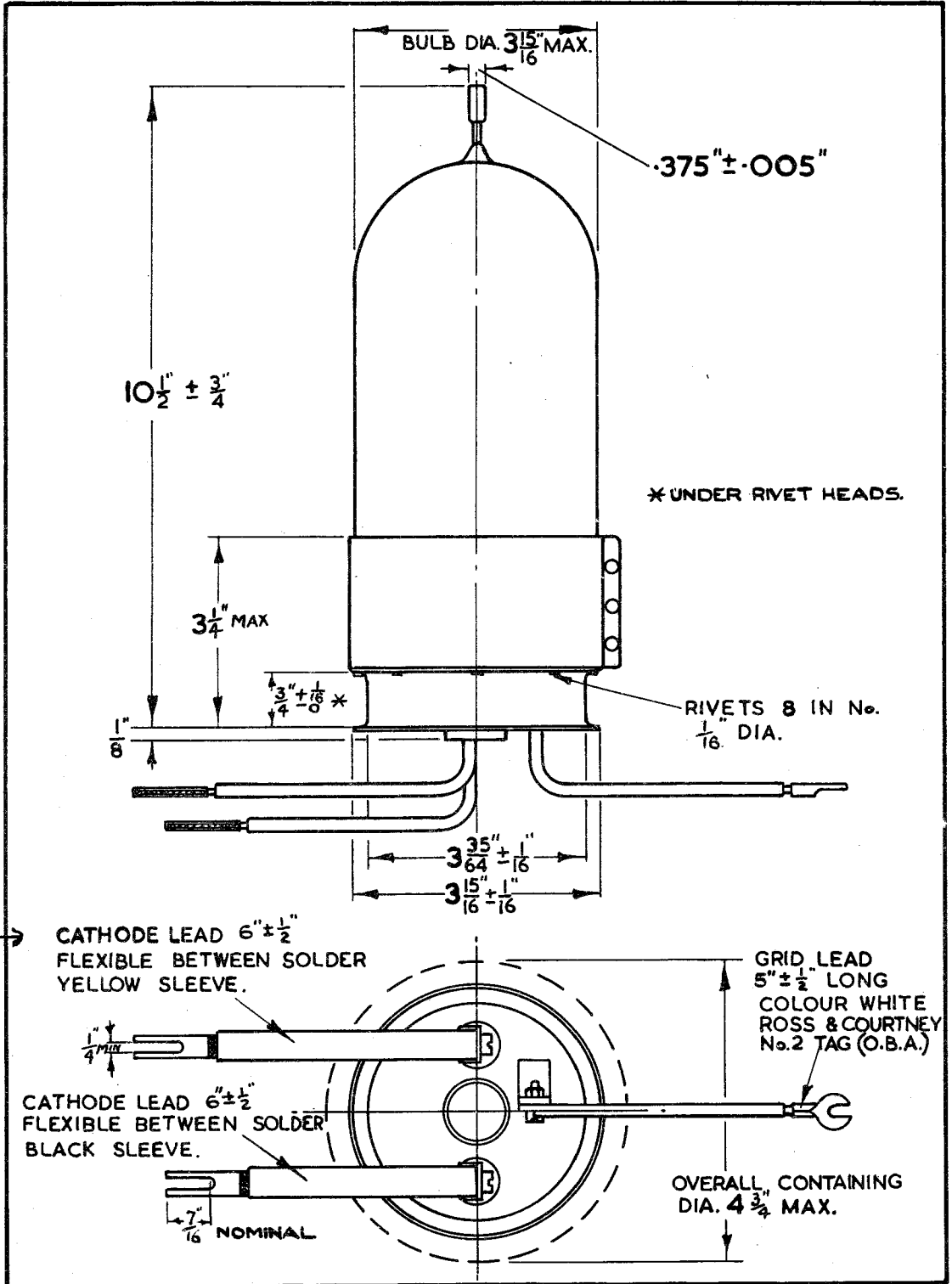
To be performed in addition to those applicable in K1001.

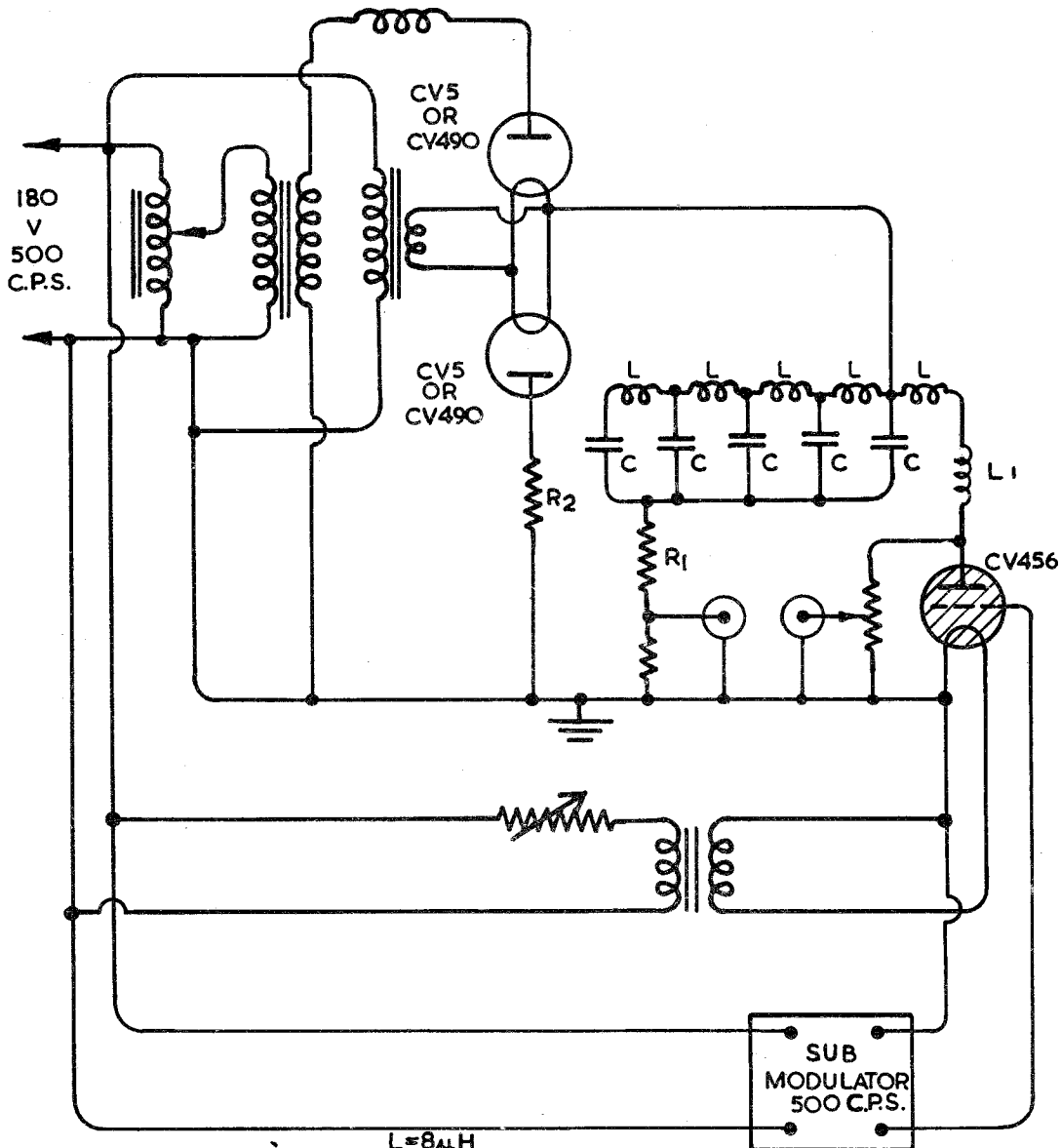
	Test Conditions			Test	Limits		No. Tested	Note
	Vf (V)	Va (kV)	Vg (V)		Min.	Max.		
a	2.5			If (A)	24.8	30.2	100%	1
b	2.5	15	-50	Operation in line discharge modulator at between 15 and 15.5 kV hold off voltage. Ia (A) Duration of test (mins.)	200 ± 3 10		100%	2.3

NOTES

1. The filament voltage should be measured at the tags at the ends of the cathode leads.
2. A test modulator according to the recommended modulator circuit of page 4 (e.g. panel 3 BA) should be used producing conditions as in Note A on page 1. After a filament heating time of 10 minutes (2 mins. only if valve was operated within the previous 24 hrs.) the valve shall not require more than 2 mins. for the anode voltage to be gradually raised until 160A current is passed and not more than 10 mins. (inclusive of the 2 mins.) until 200 A current is reached. The full load condition should not exceed 15 minutes duration.
3. No object should be placed within 1" of the glass work of the valve in operation.

CV456/3/ii





$L = 8 \mu\text{H}$
 L_1 = INDUCTANCE WHICH MUST BE ADDED TO THE STRAY CIRCUIT INDUCTANCE TO LIMIT RATE OF RISE OF ANODE CURRENT TO 600 AMPS PER MICROSECOND.
 $C = 0.005 \mu\text{F}$
 $R_1 = 37.5 \text{ OHMS APPROX. (SIX } 240\text{V } 250 \text{ WATT. LAMPS IN PARALLEL)}$
 $R_2 = 250 \text{ OHMS.}$