

VALVE ELECTRONIC **CV2006**

GENERAL POST OFFICE: E-IN-C (S)

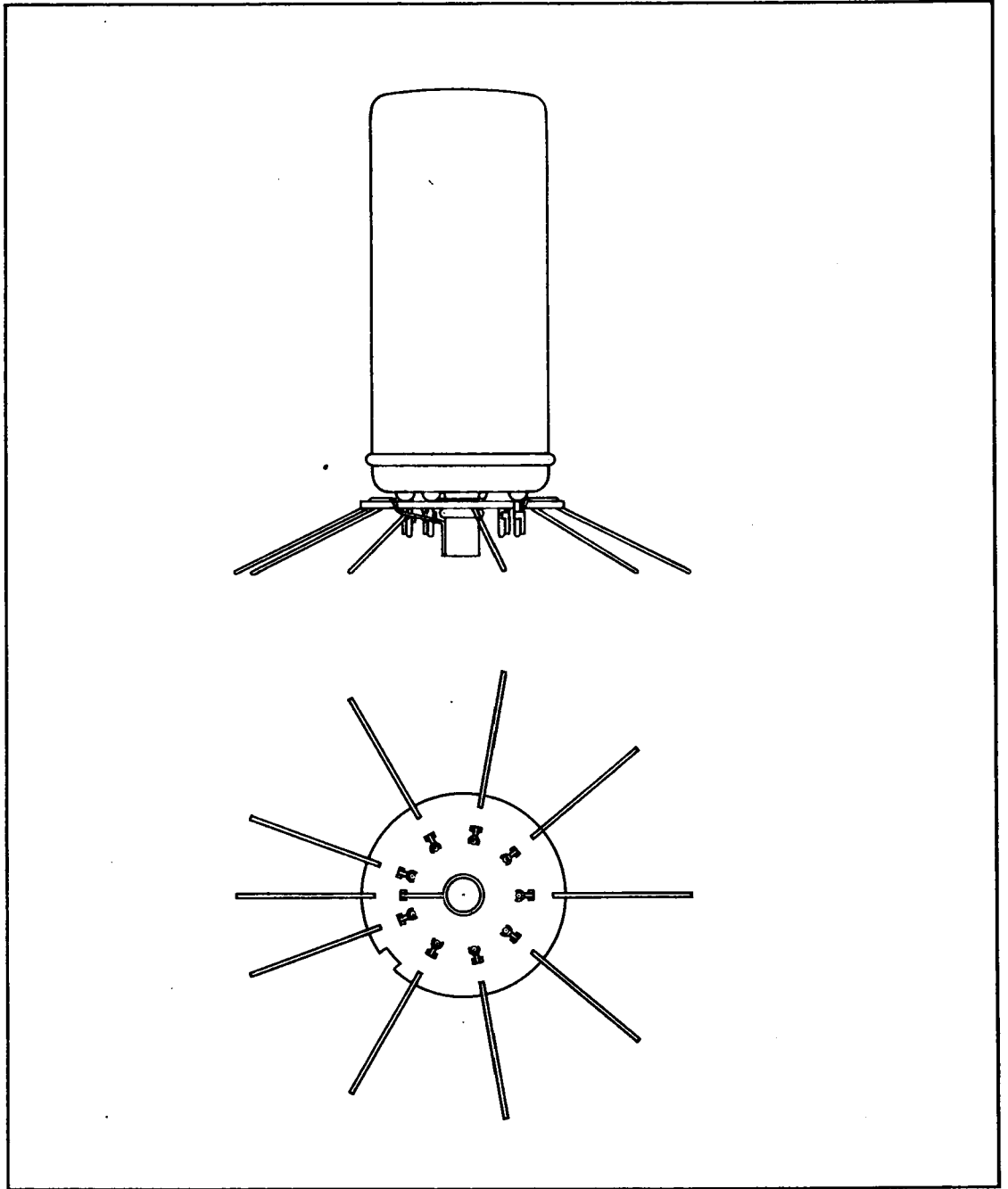
Specification: GPO/CV 2006/Issue 1 Dated: February, 1953. To be read in conjunction with K 1001	<u>SECURITY</u>	
	<u>Specification</u> Unclassified	<u>Valve</u> Unclassified

— —> indicates a change

<u>TYPE OF VALVE:</u> Video Amplifier Pentode <u>CATHODE:</u> Indirectly heated <u>ENVELOPE:</u> Glass <u>PROTOTYPE</u> CV 173	<u>MARKING</u> See K1001/4
	<u>PACKING</u> See K 1005
	<u>BASE</u> B9G/B
<p>This valve is a CV 173 selected (see note 1) with tags welded to the pins and fitted with a P.T.F.E. disc in accordance with P.O. drawing CD 713 intended for mounting in a B9G Solder-in Valveholder</p> <p>(See outline Drawing on page 2)</p> <p>Note. Mutual conductance 12.4 to 13.8mA/V with $V_a = 150V$, $V_{g2} = 250V$, and $R_k = 56$ ohms</p>	

CV2006

OUTLINE DRAWING



CV 2006/1/2