

R.F. PENTODE

Short-grid base pentode primarily intended
for use as r.f. amplifier.

6AU6

HEATER

Suitable for series or parallel operation

| | | |
|-------|-----|----|
| V_h | 6.3 | V |
| I_h | 300 | mA |

MOUNTING POSITION

Any

CAPACITANCES

Pentode connected

| | Shielded | Unshielded | |
|------------|----------|------------|----|
| C_{in} | 5.5 | 5.5 | pF |
| C_{out} | 5.0 | 5.0 | pF |
| C_{a-g1} | <0.003 | <0.003 | pF |

Triode connected

| | | | |
|------------|-----|-----|----|
| C_{in} | 3.2 | 3.2 | pF |
| C_{out} | 8.5 | 1.2 | pF |
| C_{a-g1} | 2.6 | 2.6 | pF |

CHARACTERISTICS

Pentode connected

| | | | | |
|-------------------------|------|------|------|------------|
| V_a | 100 | 250 | 250 | V |
| V_{g3} | 0 | 0 | 0 | V |
| V_{g2} | 100 | 125 | 150 | V |
| V_{g1} | -1.0 | -1.0 | -1.0 | V |
| I_a | 5.0 | 7.6 | 10.6 | mA |
| I_{g2} | 2.1 | 3.0 | 4.3 | mA |
| g_m | 3.9 | 4.5 | 5.2 | mA/V |
| r_a | 0.5 | 1.5 | 1.0 | M Ω |
| $V_{g1}(I_a = 10\mu A)$ | -4.2 | -5.5 | -6.5 | V |

Triode connected (g_2 and g_3 connected to a)

| | | |
|----------|------|------------|
| V_a | 250 | V |
| V_{g1} | -4.0 | V |
| I_a | 12.2 | mA |
| g_m | 4.8 | mA/V |
| r_a | 7.5 | k Ω |
| μ | 36 | |



6AU6

R.F. PENTODE

Short-grid base pentode primarily intended
for use as r.f. amplifier.

LIMITING VALUES

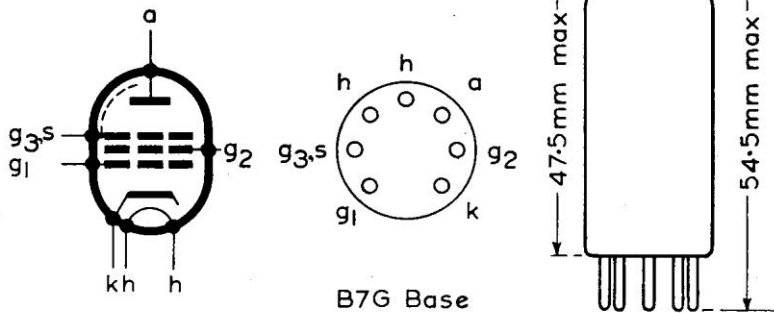
Pentode connected

| | | |
|------------------|-----|----|
| $V_{a(b)}$ max. | 550 | V |
| V_a max. | 300 | V |
| p_a max. | 3.0 | W |
| $V_{g2(b)}$ max. | 300 | V |
| V_{g2} max. | 150 | V |
| p_{g2} max. | 650 | mW |
| $+V_{g1}$ max. | 0 | V |
| $-V_{g1}$ max. | 50 | V |
| V_{h-k} max. | 100 | V |

Triode connected

| | | |
|-----------------|-----|---|
| $V_{a(b)}$ max. | 550 | V |
| V_a max. | 250 | V |
| p_a max. | 3.2 | W |
| $+V_{g1}$ max. | 0 | V |
| $-V_{g1}$ max. | 50 | V |
| V_{h-k} max. | 100 | V |

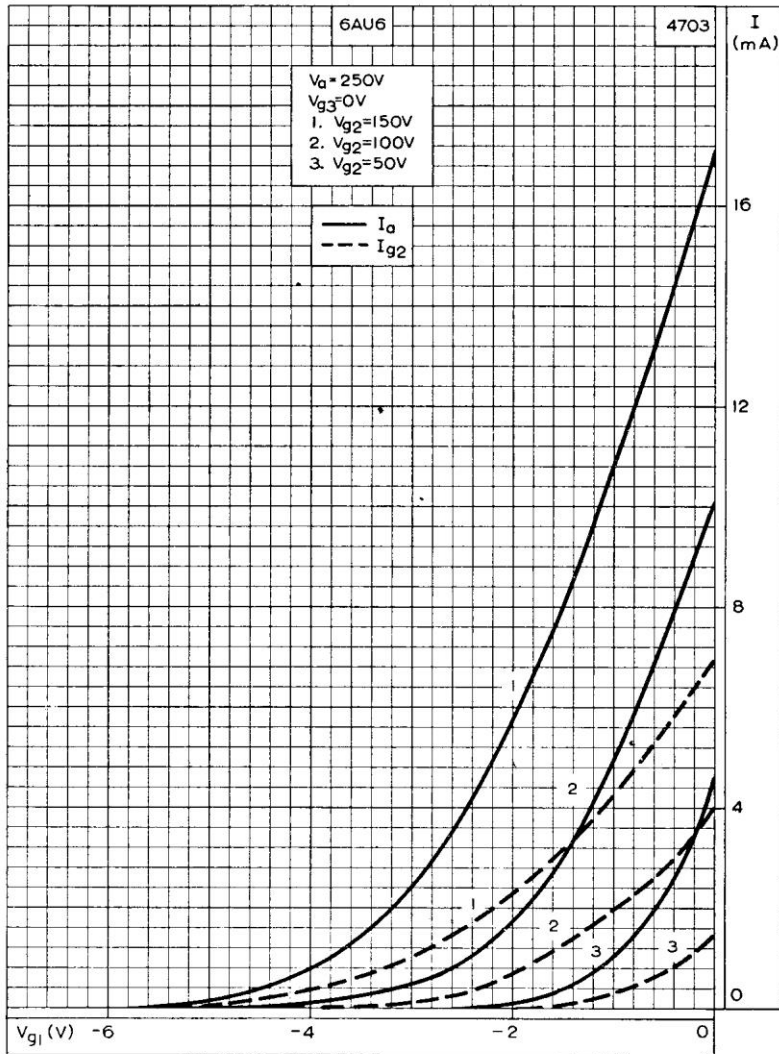
4750



R.F. PENTODE

Short-grid base pentode primarily intended for use as r.f. amplifier.

6AU6

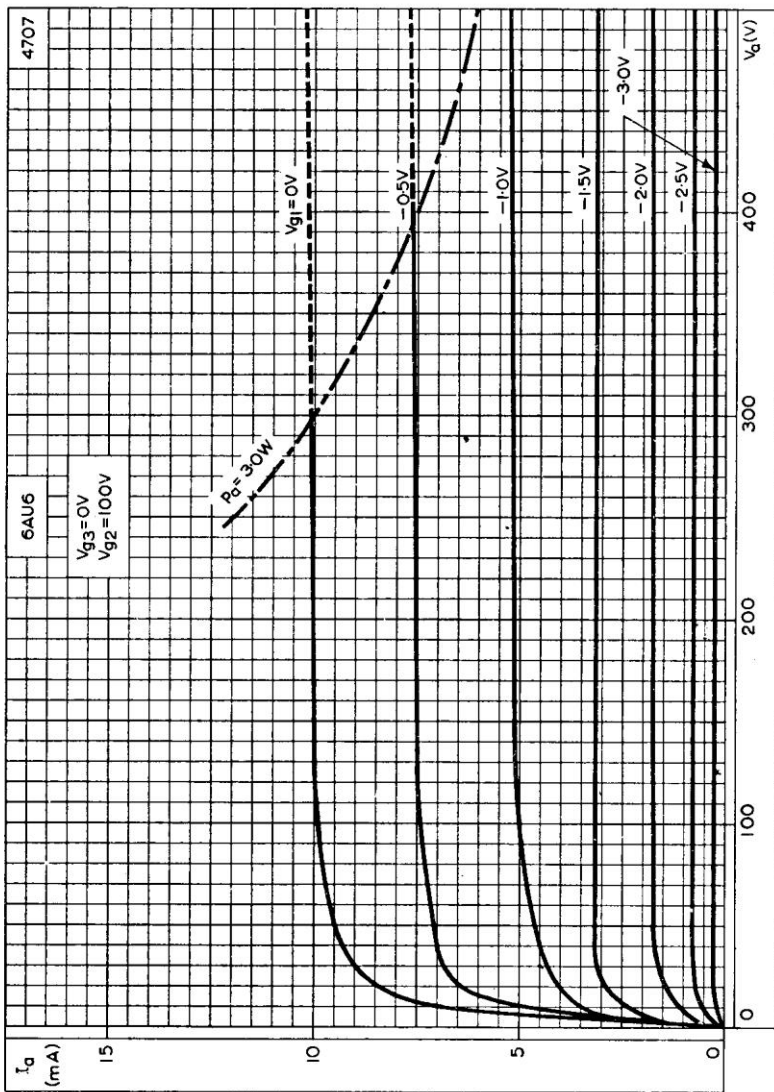


ANODE AND SCREEN-GRID CURRENTS PLOTTED AGAINST CONTROL-GRID VOLTAGE WITH SCREEN-GRID VOLTAGE AS PARAMETER

6AU6

R.F. PENTODE

Short-grid base pentode primarily intended for use as r.f. amplifier.

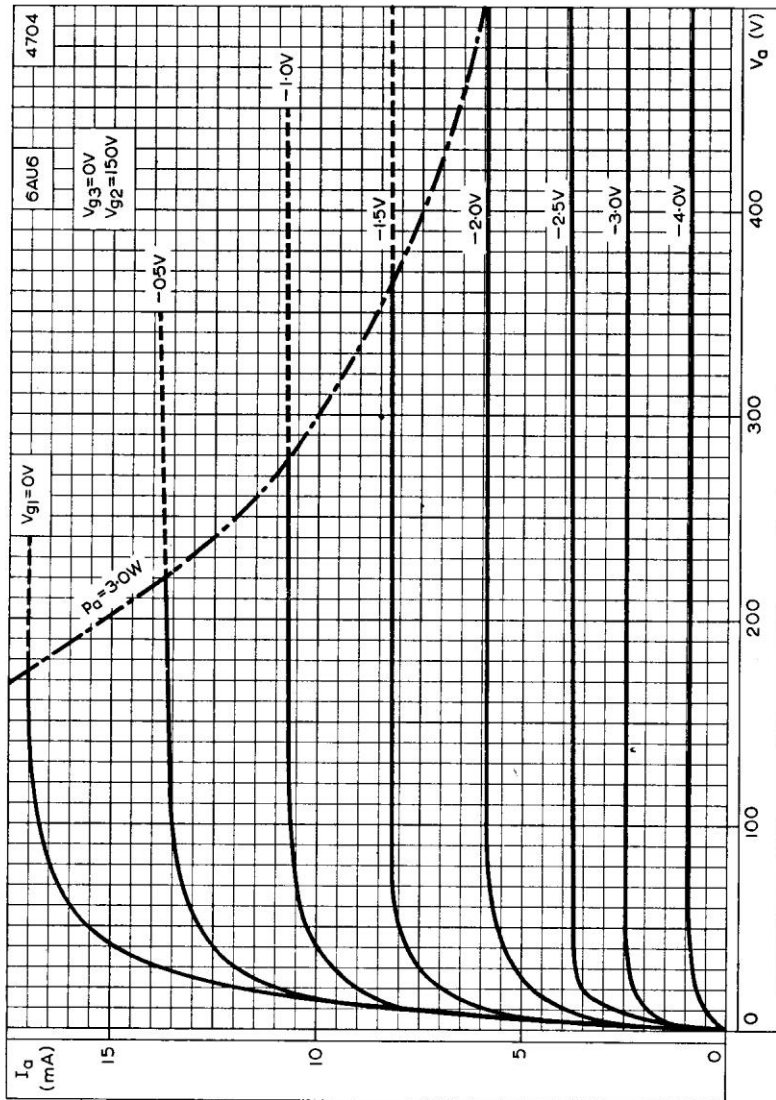


ANODE CURRENT PLOTTED AGAINST ANODE VOLTAGE WITH CONTROL-GRID VOLTAGE AS PARAMETER $V_{g2} = 100V$

R.F. PENTODE

Short-grid base pentode primarily intended for use as r.f. amplifier.

6AU6

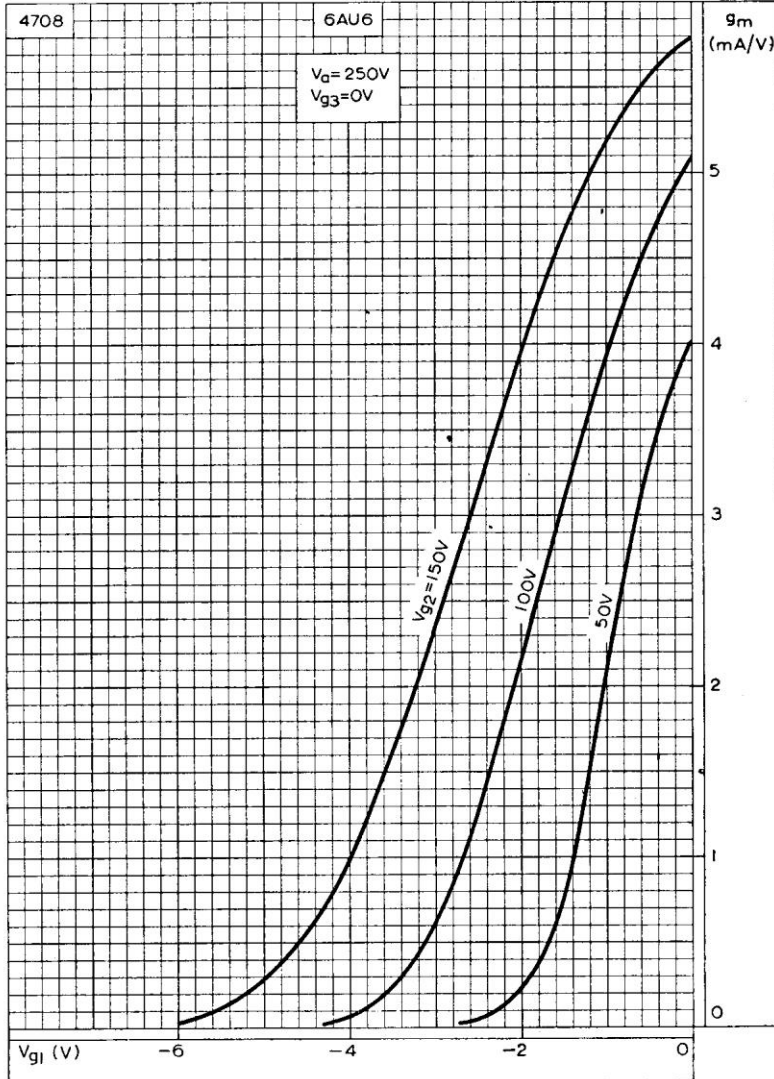


ANODE CURRENT PLOTTED AGAINST ANODE VOLTAGE WITH CONTROL-GRID VOLTAGE AS PARAMETER $V_{g2} = 150V$

6AU6

R.F. PENTODE

Short-grid base pentode primarily intended for use as r.f. amplifier.

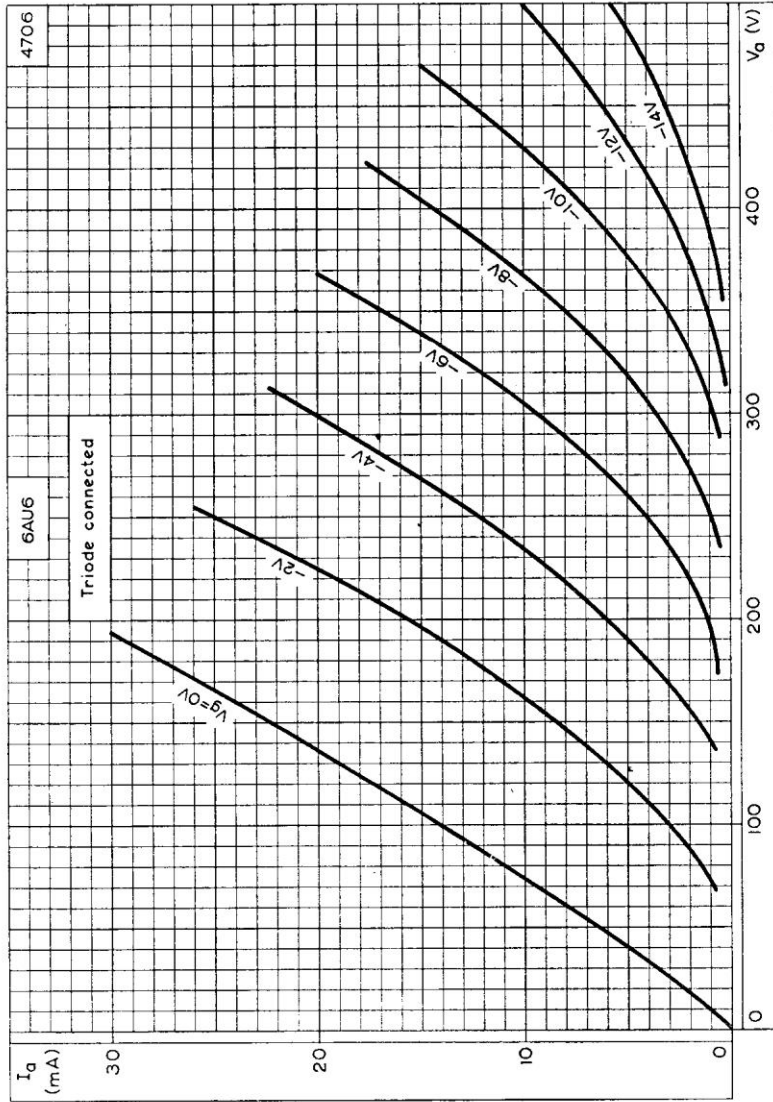


MUTUAL CONDUCTANCE PLOTTED AGAINST CONTROL-GRID VOLTAGE WITH SCREEN-GRID VOLTAGE AS PARAMETER

R.F. PENTODE

Short-grid base pentode primarily intended for use as r.f. amplifier.

6AU6



ANODE CURRENT PLOTTED AGAINST ANODE VOLTAGE WITH CONTROL-GRID VOLTAGE AS PARAMETER WHEN TRIODE CONNECTED

