

Type P.M.254

SUPER-POWER OUTPUT VALVE

Price 13/6
(In I.F.S. 15/-)

Application.

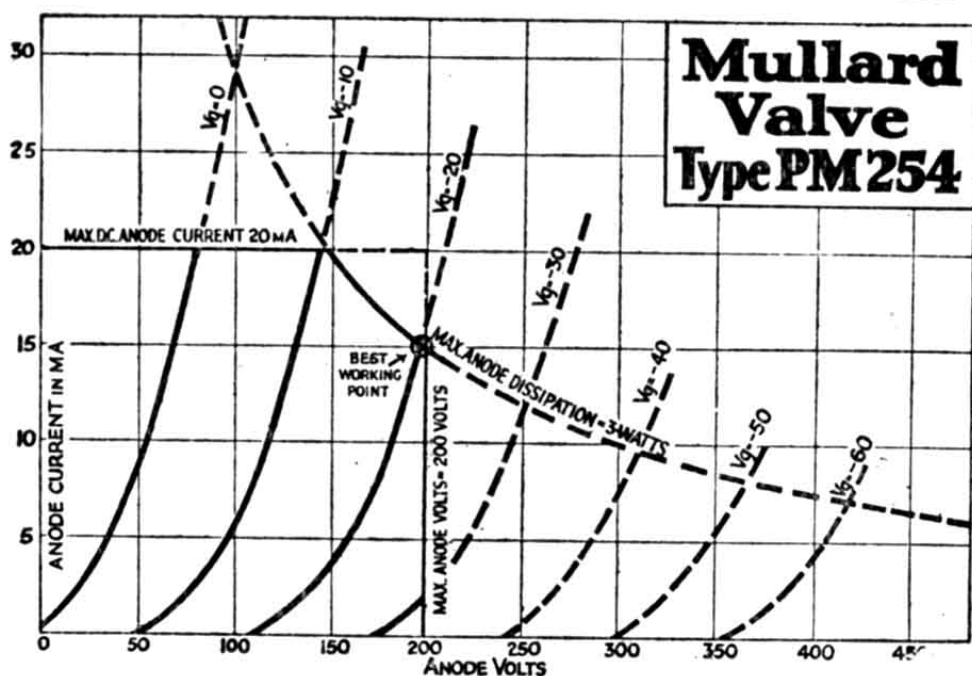
Super power output valve.

Characteristics.

- *Anode Impedance 2,150 ohms
- *Amplification Factor 6.5
- *Mutual Conductance 3.0 mA./volt
- *At Anode Volts 100 ; Grid Volts, Zero.

Operating Data.

- Max. Filament Voltage 4.0 volts
- Filament Current 0.2 amp.
- Max. Anode Voltage 200 volts



Grid Bias Table.

Anode Voltage.	Approx. Neg. Grid Bias Voltage.	Approx. Anode Current (mA).
100	9.0	6.0
150	15.0	10.0
200	21.0	15.0

Mullard the Master Valve