

ADMIRALTY SIGNAL ESTABLISHMENT

Specification AD/CV1265 Issue No.2. Dated 13.6.47. To be read in conjunction with K1001, ignoring clause 5.8.	<u>SECURITY</u>	
	<u>Specfn.</u> Restricted	<u>Valve.</u> Unclassified

<u>TYPE OF VALVE:-</u> High vacuum, half-wave rectifier. <u>CATHODE:-</u> Directly heated, oxide coated. <u>ENVELOPE:-</u> Glass, clear. <u>PROTOTYPE:-</u> U15, RZ1-250.	<u>MARKING</u>		
	See K1001/4.		
	<u>BASE</u> L4		
	See K1001/AIV/D6		
	<u>Pin</u>	<u>Electrode</u>	
	1	Anode	
	2	Filament	
	3	Filament	
	4	No connection	
	<u>DIMENSIONS</u>		
	See K1001/AI/D1		
	<u>Dimension</u>	<u>Min.</u>	<u>Max.</u>
	A mm.	-	185
	B mm.	-	52
	<u>PACKAGING</u>		
	See K1005.		
<u>RATING</u>			
Filament voltage (V)	6.0		
Filament current (A)	2.0		
Max. RMS applied anode voltage (V)	1,500		
Max. rect. anode current (mA)	250		

TESTS

To be performed in addition to those applicable in K1001.

	Test Conditions		Test	Limits		No. Tested
	Vh (V)			Min.	Max.	
a	6.0		If (A)	1.75	2.25	100%
b	6.0	Valve operated in circuit of Fig. 1 below, with conditions as shown. RL adjusted (measured on meter 'V') to give 250 mA rectified current measured at meter 'A'.	Voltage across RL. (V)	1,200	-	100%

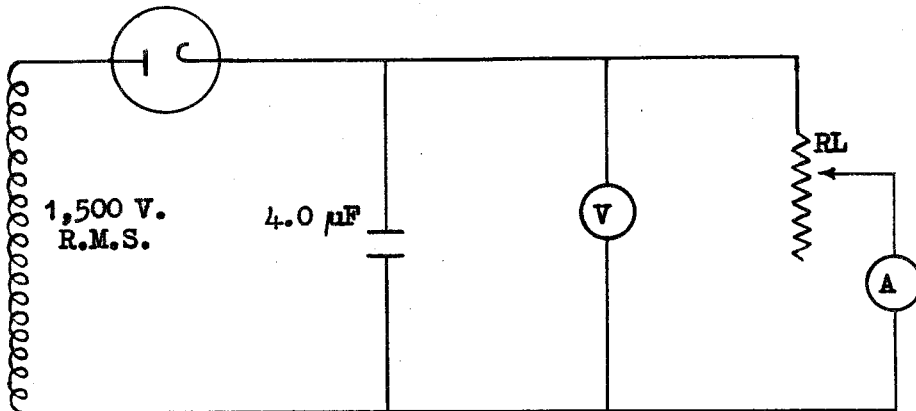


FIG. 1.